



38 Suffolk Road

, Burton-On-Trent, DE15 9HS

Offers in excess of £175,000



Burton's only "Legally Trained" Estate are delighted to bring to the market this three-bedroom semi-detached home situated in a convenient and popular location. Burton on Trent's town centre is just a short drive or walk along the Ferry Bridge taking in the lovely views of The Trent.

The house is being sold CHAIN FREE & VACANT POSSESSION.

This three-bedroom property has the benefit of uPVC double glazed and gas central heating throughout.

This traditional home is set over two floors. The ground floor comprises of an entrance hall, lounge, open plan kitchen/diner, a W/C, storage room and a separate utility room. The first floor has three double bedrooms and a family bathroom.

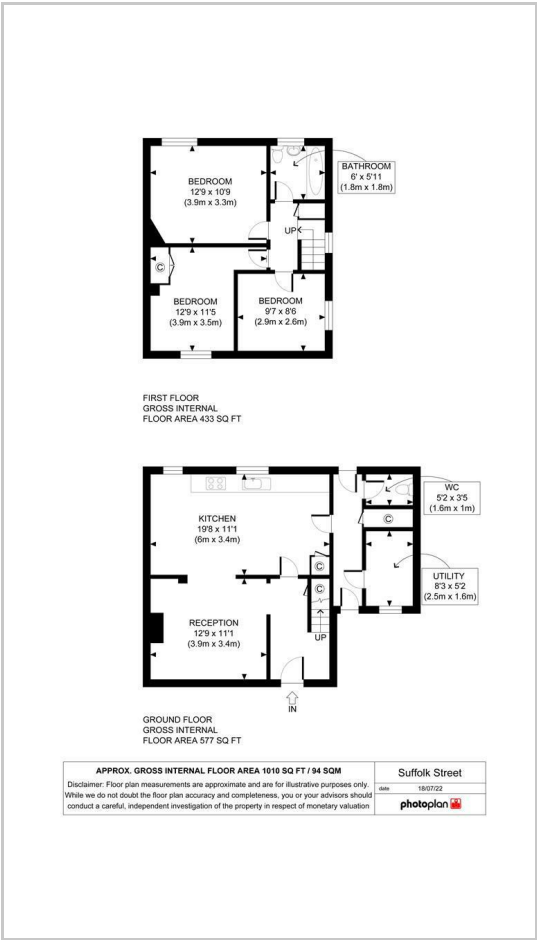


- LOUNGE 12'9" x 11'1" (3.9 x 3.4)
- KITCHEN/DINER 19'8" x 11'1" (6 x 3.4)
- W.C 5'2" x 3'3" (1.6 x 1)
- UTILITY 8'2" x 5'2" (2.5 x 1.6)
- MASTER BEDROOM 12'9" x 10'9" (3.9 x 3.3)
- BEDROOM TWO 12'9" x 11'5" (3.9 x 3.5)
- BEDROOM THREE 9'6" x 8'6" (2.9 x 2.6)
- BATHROOM 5'10" x 5'10" (1.8 x 1.8)

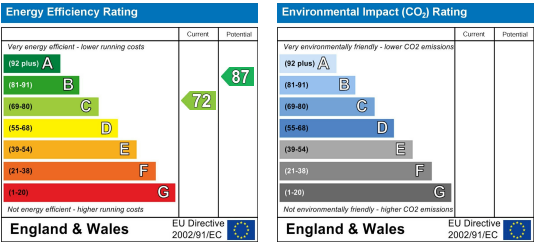
Area Map



Floor Plans



Energy Efficiency Graph



These particulars, whilst believed to be accurate are set out as a general outline only for guidance and do not constitute any part of an offer or contract. Intending purchasers should not rely on them as statements of representation of fact, but must satisfy themselves by inspection or otherwise as to their accuracy. No person in this firms employment has the authority to make or give any representation or warranty in respect of the property.